

AT-510D

1 pair / 2 pairs/ 4 pairs G.SHDSL Bridge / Router




Description

AT-510D is a high-speed product of Taicom G.SHDSL series. Understanding the urgent needs of both bandwidth and routing functions, AT-510D is designed to provide the business customer a high performance standalone unit with rich of routing features via single/two/four pairs G.SHDSL line. Strongly committed to friendly configuration, AT-510D has the Web-based and GUI-based configuration features for configuring the unit in the easiest way ever.

Features

- Easy configuration and management with password control for various application environments
- Efficient IP routing and transparent learning bridge to support
- broadband Internet services
- Fully ATM protocol stack implementation over SHDSL
- Getting enhancements and new features via firmware upgrade
- Built-in 4-port 10/100Mbps switch
- Web ,Telnet supported
- One pair or Two pairs or four pairs DSL
- WAN Port ping Disable /Enable
- Support IEEE802.1p with 4 – level Queue
- Support VLAN 802.1Q, QinQ
- Support 4094 VLAN and VLAN ID and VLAN tag and remove features
- Support basic firewall configuration. Support IP / MAC / DNS filter.
- Support SNTP protocol to get network time.
- Support Syslog
- Support IP version 4 and IP version 6.

- 
- Support device loopback interface IP address
 - Support IP secondary address.
 - Support SNAT / DNAT.
 - Support rapid spanning tree.
 - PPTP, L2TP VPN or VPN pass-through for safeguarded connections
 - PPPoE support user authentication with PAP / CHAP
 - SNMP management with SNMPv1 / SNMPv2 agent and MIB II

Specification

■ G.SHDSL Specification

- Downstream and upstream symmetrical data rates up to 60M in EFM with four pairs DSL line
- ITU G.991.2 Annex A ,B,F,G
- Line Code: TC-PAM 16/32/128
- EFM bonding and SHDSL M-pair mode for 1/2/4 pairs
- Fixed/ Auto rate negotiation : compliant G.994.1
- STU-C/STU-R mode selectable
- Impedance: 135 ohm
- Performance monitoring: (error seconds, severely error seconds, unavailability seconds)
- SNR /Attenuation Value calculation

Physical interfaces

- 4 ports RJ45 for 10/100Mbps Ethernet LAN connection
- 2 RJ-45 port for G.SHDSL connection (x1 for 2 / 4wires, x2 for 8 wires)
- 1 console port for local configuration and management

Software

ATM Protocol

- VC multiplexing and LLC encapsulation
- Multi-protocol over AAL5 (RFC 1483/2684 bridged and routed PDU)
- Classical IP over ATM (RFC 1577 with MTU = 1500)
- 8 PVCs
- UNI 3.1/4.0 PVC
- I.610 OAM F5 loopback

PPP Support

- PPP (RFC 1661)
- PPP over Ethernet (RFC 2516)
- User authentication with PAP/CHAP
- PPTP and L2TP (VPN)



Routing Capability

- Support IP/TCP/UDP/ARP/ICMP protocols
- IP routing with static routing and RIPv2 (RFC1058/2453)
- Network address translation (NAT/PAT) (RFC1631), one to one, many to one, many to many
- DNS relay and caching (RFC1034/1035)
- DHCP server (RFC2131/2132)
- Support IP / MAC / DNS Filter
- Support DDNS function
- Support OSPF
- Support BGP

Bridging

- IEEE 802.1D transparent learning bridge
- IEEE 802.1Q and port based VLAN
- Up to 2048 MAC learning addresses
- Rapid spanning tree (802.3w)

Configuration

- Local console (RS232)
- Telnet access
- SSH
- Web-based GUI (HTTP)
- Web-based GUI (HTTPS)

Network Management

- Web-based GUI for express setup, configuration and management
- Local console and Telnet access, command line and configure for sub-interfaces.
- Password protected management and access control list for administration
- SNMP management with SNMPv1/SNMPv2c
- Software upgrade via TFTP server, FTP, HTTP, HTTPS
- Supports inband management vlan.

■ Hardware

Power Supply	External power adapter 12V DC, 1000mA
LAN Port	RJ45 x 4
WAN Port	RJ45 x 1 (2 / 4 wires), 2 (8 wires)
Console Port	RJ45 x 1
Operating temperature	0° to 45°C
Storage temperature	-10° to 70°C
Housing	plastic case
Dimension	220mm x 150mm x 40mm (L x W x H)

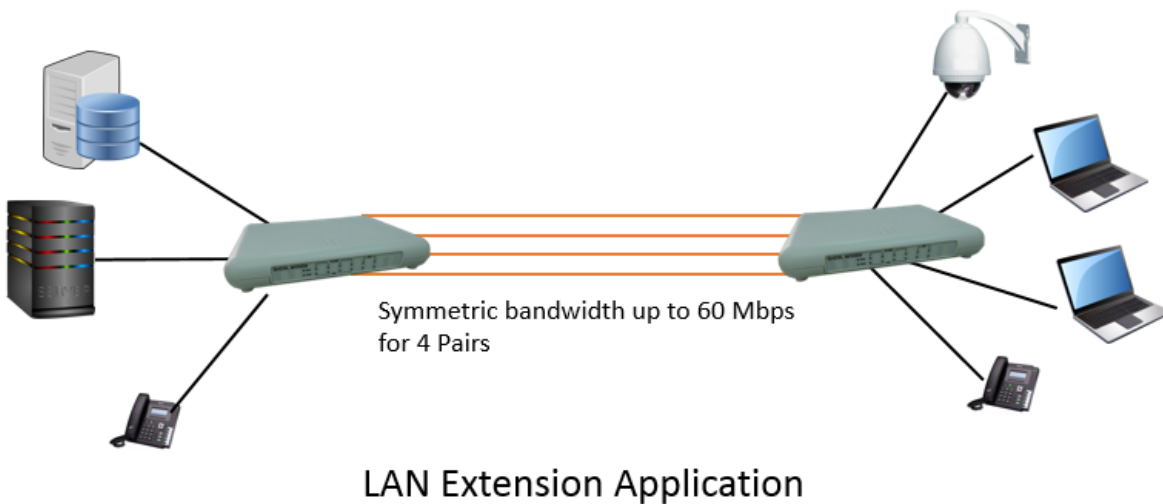
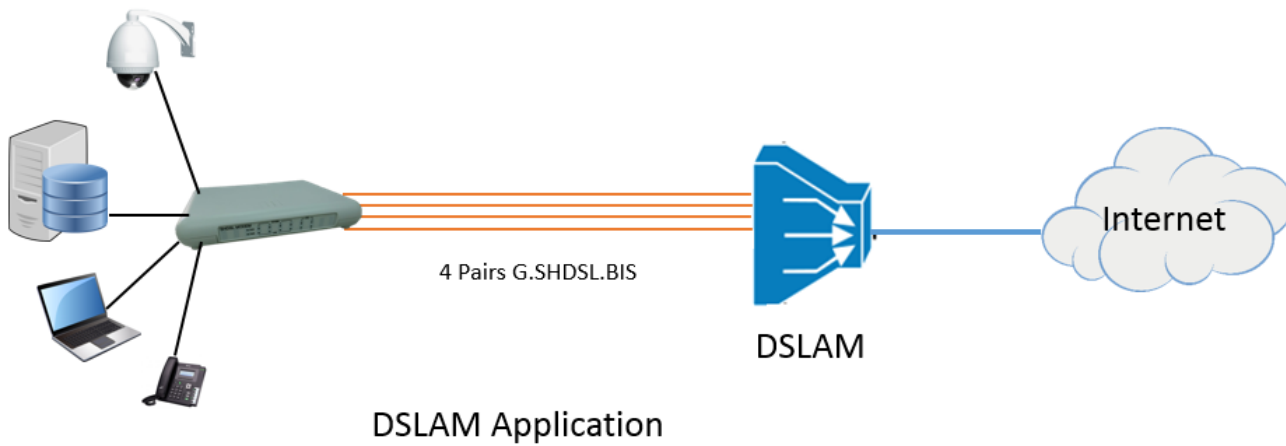


Ordering

AT-510D

- i1 Specify the SHDSL loop.
 - 01 Single pair GSHDSL only
 - 02 Two pair GSHDSL
 - 03 Four pair GSHDSL

Application



ATRIE TECHNOLOGY INC.

10 th Floor, No.14, Lane 609, Sec. 5, Chung Hsin Rd.,
San Chung District, New Taipei City, Taiwan 24159, R.O.C.
TEL:+886-2-29995155 FAX:+886-2-29994960
E-mail:contacts@mail.atrion.com.tw
<http://www.atrion.com.tw>



- Product specifications are subject to change without notice.
- Please contact your dealer for option availability.
- All brand names are registered trademarks of their respective owners.