



# WireSpan 620

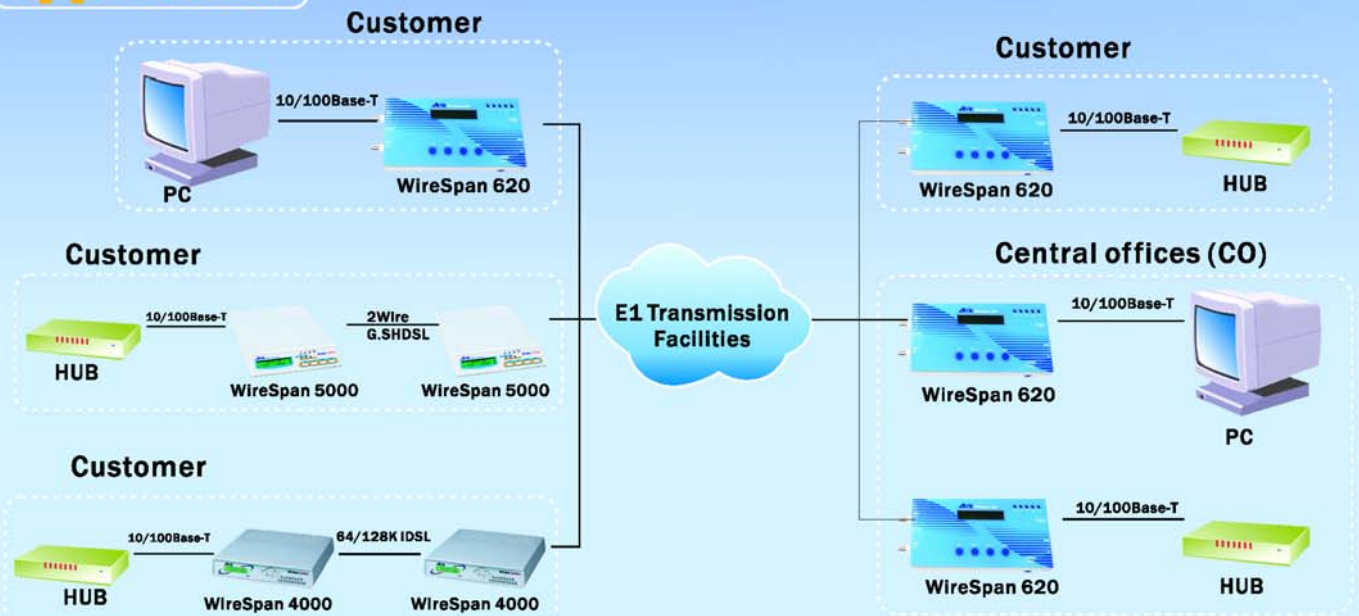
## Fractional E1/Ethernet Access Unit



### Features

- Interface conversion between E1 G.703 and Ethernet.
- Built-in NVRAM to store user setting.
- LED indicators include PWR, SYN, BPV, LINK/ACT and 10/100.
- Supports idle code insert or pass through function.
- Provides universal switching power adapter to enhance reliability.
- Compact size easy to setup anywhere.
- Selectable data rates of n x 64Kbps, up to 2048 Kbps.
- Framing format: PCM31, PCM30 .
- Unframed E1 access unit with 2048 Kbps data rate.
- Controls and setting via 16 x 2 LCD and 4 keypads.
- Firmware upgradeable through console port.
- Connect 10BASE-T and 100BASE-TLANs and VLANs over E1.

### Application



# Fractional E1/Ethernet Access Unit

## Specifications

Item	Model	WireSpan 620
<b>Interface</b>		E1 G.703
Type		Full-duplex fixed at 2048Kbps $\pm$ 32 ppm
Line		Two unconditional twisted pairs (4 wires)
Range		Up to 1000 ft. / 26AWG
Impedance		120 ohms (balanced) for twisted pair 75 ohms (unbalanced) for coaxial cable
Complies with		ITU-T G.703, G.704, G.706, G.732 and G.823
Frame format		PCM30 /PCM31 / Un-frame
CRC check		CRC-4 / Non CRC
Line code		HDB3 / AMI
Connector		BNC or RJ-48C
<b>Ethernet Interface</b>		
Type		Auto-sensing 10 / 100BASE-T Ethernet
Data rate		10 Mbps / 100 Mbps
Connector		RJ-45 (PC / HUB)
Bridging		Dynamically learning and aging up to 1,024 MAC addresses
<b>Management</b>		
Clock mode		Internal, E1 ( $\pm$ 50 ppm)
Indicator		PWR, SYS, BPV, LINK / ACT, 10 / 100
Configuration		16 x 2 characters LCD panel via 4 keypads or console port
Diagnostic		Digital Loopback
<b>Power Requirement</b>		
Input / Output Voltage		100 ~ 240 VAC @ 50 ~ 60 Hz / 5 VDC, 2A
<b>Environment</b>		
Operating temperature		0°C ~ 50°C
Humidity		0 to 90% Non-condensing
<b>Physical Dimensions</b>		19 cm (L) x 10cm (W) x 2.8 cm (H)



**ATRIE TECHNOLOGY INC.**

10F,14, Lane 609 Sec. 5 Chung Hsin Rd.,  
San Chung City, Taipei Hsien, Taiwan, 241, R.O.C.

Tel: 886-2-2999-5155 Fax: 886-2-2999-4960

E-mail: [contacts@mail.atrte.com.tw](mailto:contacts@mail.atrte.com.tw)

[http:// www.atrte.com.tw](http://www.atrte.com.tw)



- Product specifications are subject to change without notice.
- Please contact your dealer for option availability.
- All brand names are registered trademarks of their respective owners.

95010001