

# Atrie

# WireSpan 630

CE

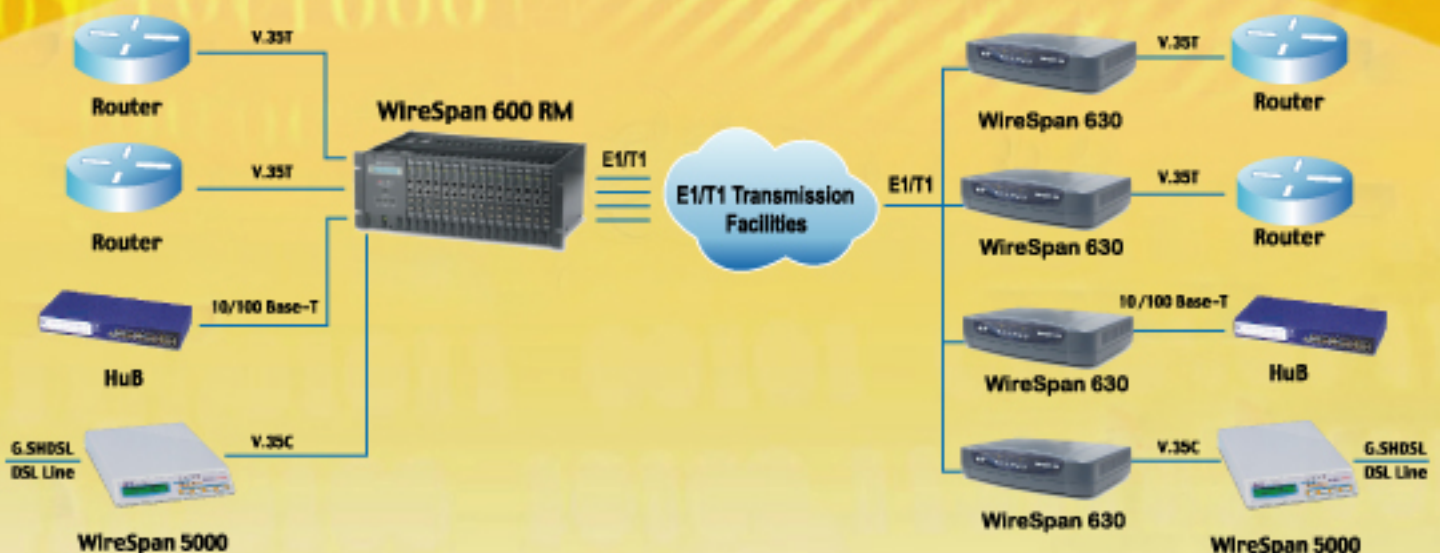
## Fractional E1 / Ethernet V.35 Access Unit



### Features

- \* Interface conversion between E1 G.703/T1 and Ethernet or V.35 with DTE/DCE.
- \* Built-in NVRAM to store user setting.
- \* LED indicators include PWR · SYN · BPV · ALM · 10/ACT · 100/ACT.
- \* Supports idle code insert or pass through function.
- \* Selectable data rates of N x 64kbps up to 2048 kbps.
- \* TFTP firmware upgradeable through Ethernet port.
- \* supports Telnet configuration via Ethernet port.
- \* Full function configuration via console port.
- \* Supports VLAN.

### Application





## Fractional E1 / Ethernet V.35 Access Unit

### Interface Specifications

<b>E1 Interface</b>	
<b>Line Rate</b>	2048 Mbps ±50 ppm
<b>Line Impedance</b>	120 ohms (balanced) for twisted pair 75 ohms (unbalanced) for coaxial cable
<b>Complies with</b>	ITU-T G.703,G.704,G.706,G.732 and G823
<b>Frame format</b>	Un-frame/ frame/ frame+CRC
<b>Line code</b>	HDB3/AMI
<b>Connector</b>	BNC,RJ-48C
<b>T1 Interface (option)</b>	
<b>Line Rate</b>	1.544 Mbps ±32 ppm
<b>Line Impedance</b>	100 ohms (balanced) for twisted pair
<b>Complies with</b>	ANSI T1.403
<b>Frame format</b>	SF/ESF/Unframed
<b>Line code</b>	B8ZS/AMI
<b>Connector</b>	BNC,RJ-48C
<b>V.35 Interface</b>	
<b>Type</b>	V.35
<b>Data Rate</b>	N X 64 Kbps (N = 1 ~ 32)
<b>Connector</b>	M34 (Female)
<b>Ethernet Interface</b>	
<b>Type</b>	Auto-Crossover dection Auto-sensing 10/100 Base-T Ethernet
<b>Data Rate</b>	10Mbps/100Mbps
<b>Complies with</b>	IEEE 802.3
<b>Duplex</b>	Half / Full duplex
<b>Connector</b>	RJ-45
<b>Bridging</b>	Dynamically learning and aging up to 2K MAC addresse
<b>VLAN</b>	Transparent pass / VLAN (option)

<b>Management</b>	
<b>Clock mode</b>	Internal, Recovery, Data port±50 ppm
<b>Indicator</b>	PWR, SYN, BPV, ALM,10/ACT, 100/AC
<b>Configuration</b>	Telnet via Ethernet Port , Console port
<b>Diagnostic</b>	Local Loopback, Digital Loopback

**Physical Dimensions** 240 mm (L) x 164 mm (W) x 54 mm (H)

<b>Power Requirement</b>	
<b>Input Voltage</b>	100 ~ 240 VAC @ 50 ~ 60 Hz 36~72 VDC(option)

<b>Environment</b>	
<b>Temperature</b>	0 to 50 degree C
<b>Humidity</b>	0 to 90 percent, Non-condensing



**ATRIE TECHNOLOGY INC.**  
 10F, 14, Lane 609, Sec. 5, Chung Hsin Rd.,  
 San Chung City, Taipei Hsien, Taiwan, 241, R.O.C.  
 Tel:+886-2-2999-5155 Fax:+886-2-2999-4960  
 E-mail: contacts@mail.atr.ie.com.tw  
[http:// www.atr.ie.com.tw](http://www.atr.ie.com.tw)

