

Atrie

WireSpan 630

CE

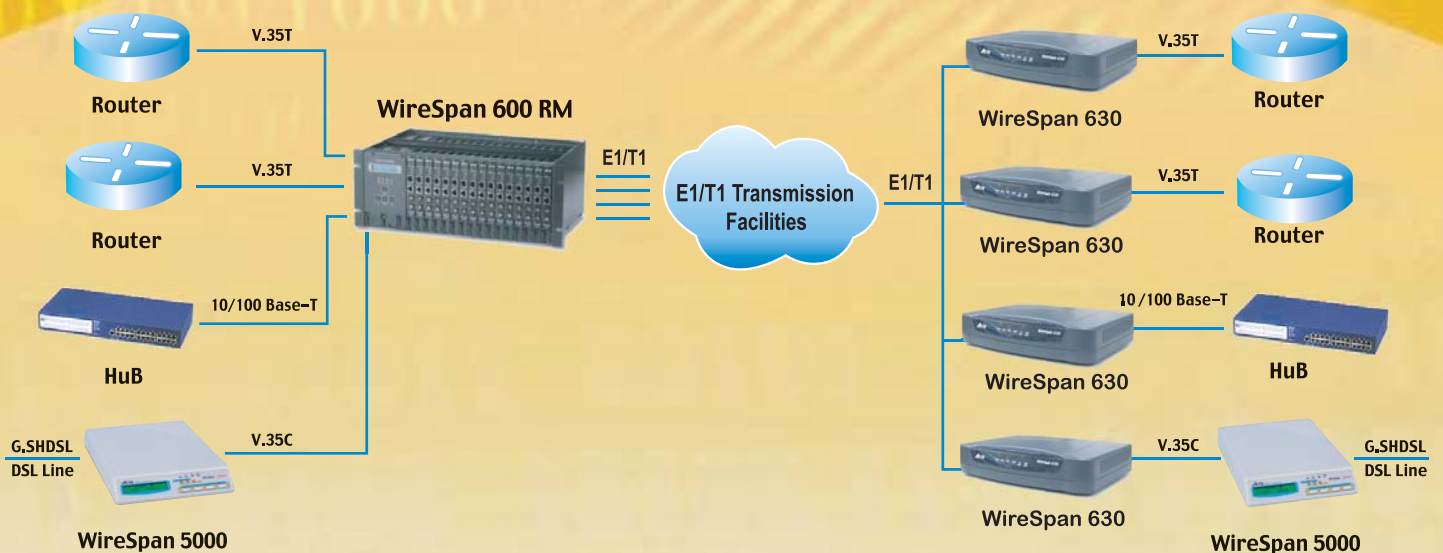
Fractional E1 / Ethernet V.35 Access Unit



Features

- * Interface conversion between E1 G.703/T1 and Ethernet or V.35 with DTE/DCE.
- * Built-in NVRAM to store user setting.
- * LED indicators include PWR , SYN , BPV , ALM , 10/ACT , 100/ACT.
- * Supports idle code insert or pass through function.
- * Selectable data rates of N x 64kbps up to 2048 kbps.
- * TFTP firmware upgradeable through Ethernet port.
- * supports Telnet configuration via Ethernet port.
- * Full function configuration via console port.
- * Supports VLAN.

Application



Fractional E1 / Ethernet T1 / V.35 Access Unit

Interface Specifications

E1 Interface

Line Rate	2048 Mbps ±50 ppm
Line Impedance	120 ohms (balanced) for twisted pair 75 ohms (unbalanced) for coaxial cable
Complies with	ITU-T G.703,G.704,G.706,G.732 and G.
Frame format	Un-frame/ frame/ frame+CRC
Line code	HDB3/AMI
Connector	BNC or RJ-48C

T1 Interface (option)

Line Rate	1.544 Mbps ±32 ppm
Line Impedance	100 ohms (balanced) for twisted pair
Complies with	ANSI T1.403
Frame format	SF/ESF/Unframed
Line code	B8ZS/AMI
Connector	BNC or RJ-48C

V.35 Interface

Type	V.35
Data Rate	N X 64 Kbps (N = 1 ~ 32)
Connector	M34 (Female)

Ethernet Interface

Type	Auto-Crossover dection Auto-sensing 10/100 Base-T Ethernet
Data Rate	10Mbps/100Mbps
Complies with	IEEE 802.3
Duplex	Half / Full duplex
Connector	RJ-45
Bridging	Dynamically learning and aging up to 2K MAC addresse
VLAN	Transparent pass / VLAN (option)

Management

Clock mode	Internal, Recovery, Data port±50 ppm
Indicator	PWR, SYN, BPV, ALM,10/ACT, 100/AC
Configuration	Telnet via Ethernet Port , Console port
Diagnostic	Local Loopback, Digital Loopback

Physical Dimensions 240 mm (L) x 164 mm (W) x 54 mm (H)

Power Requirement

Input Voltage	100 ~ 240 VAC @ 50 ~ 60 Hz 36~72 VDC(option)
---------------	---

Environment

Temperature	0 to 50 degree C
Humidity	0 to 90 percent, Non-condensing



ATRIE TECHNOLOGY INC.

10F., 14, Lane 609, Sec. 5, Chung Hsin Rd.,
San Chung City, Taipei Hsien, Taiwan, 241, R.O.C.
Tel: +886-2-2999-5155 Fax: +886-2-2999-4960
E-mail: contacts@mail.atrion.com.tw
[http:// www.atrion.com.tw](http://www.atrion.com.tw)



200811-A

Product specifications are subject to change without notice.
Please contact your dealer for option availability.
All brand names are registered trademarks of their respective owners.